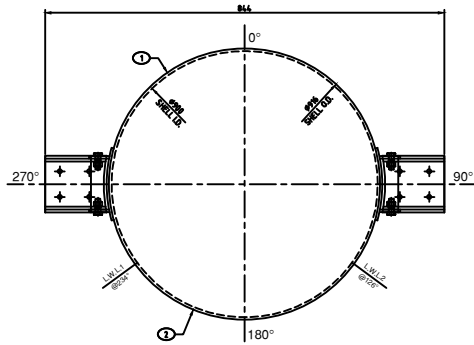
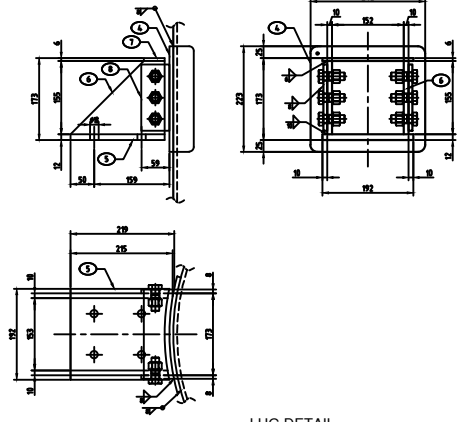


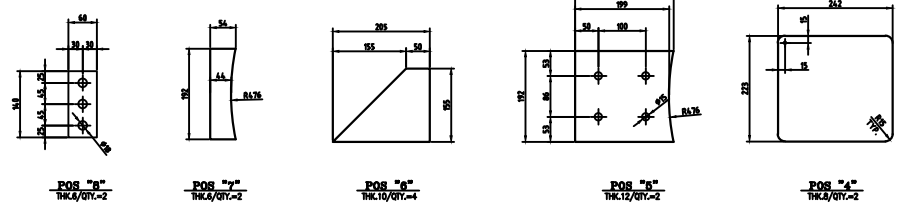
GENERAL VIEW
SC.= 1 : 8



TOP VIEW
SC.= 1 : 8



LUG DETAIL
SC.= 1 : 5



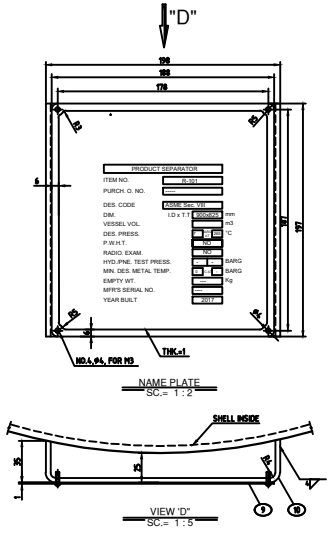
FOS "8"
THK.4/QT.=2

FOS "7"
THK.4/QT.=2

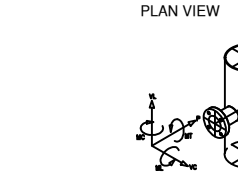
FOS "6"
THK.10/QT.=4

FOS "5"
THK.12/QT.=2

FOS "4"
THK.4/QT.=2



VIEW "D"
SC.= 1 : 2



PLAN VIEW

DESIGN DATA	
EQUIPMENT NAME	BATCH REACTOR
TAG NO	R-101
QTY	1
DESIGN CODE	ASME SEC.VIII
SERVICE	HEAT
SPECIFIC GRAVITY	1.7
GEOMETRY VOLUME	~ m3
OPERATING VOLUME	~ m3
INTERNAL DIAMETER	900
HEIGHT	125
TOTAL LENGTH (FACE TO FACE OF FLG.)	1292
OPERATING PRESSURE	195 Bar(g)
OPERATING TEMPERATURE (MIN./MAX)	7
DESIGN INTERNAL PRESSURE	7 Bar(g)
VAN DIJLE PRESSURE	265 Bar(g)
DESIGN TEMPERATURE	265
M.O.M.	
HYDROSTATIC PRESSURE	Bar(g)
PRELIMINARY PRESSURE	NONE
FILLING RATE	m3/hr
EMPTYING RATE	m3/hr
RADIOGRAPHY TEST	AS PER CODE
SEISMIC ZONE	3
WIND VELOCITY	KM/H
CORROSION ALLOWANCE	SHELL = 0 HEAD = 3.5
SHELL THICKNESS	10
HEAD THICKNESS (AFTER FORMING-DOWNLIFT)	10
TANK EMPTY WEIGHT (WITH 5% FILLER METAL)	10
TANK OPERATING WEIGHT	

MATERIALS	
SHELL / WEAR PLATE	monel 400
HEAD	monel 400
LUGS	monel 400
FLANGE	monel 400
FITTING	monel400
GASKET	
INTERNAL STRUCTURE	
EXTERNAL STRUCTURE	
FINAL INTERNAL PAINTING	
FINAL EXTERNAL PAINTING	

AS-BUILT

PART LIST						
POS.	PART NAME	DESCRIPTION	QTY.	MATERIAL	Wt	Wt
					KG	KG
1	SHELL PLATE	PL 3000x721#	1	SS-280 2	82.0	82.0
2	SHELL PLATE	PL 863x721#	1	SS-280 2	22.2	22.2
3	TEMPERATURE HEAD	LX. 400. THK=8	2	SS-280 2	843.2	1288.4
4	PAD PLATE	PL 242x223#	2	SS-280 2	1.3	3.8
5	BASE PLATE	PL 306x192x12	2	A363 0r/0	3.9	7.8
6	RIB PLATE	PL 305x192x10	4	A363 0r/0	1.5	6.0
7	TOP PLATE	PL 54x192x8	2	A363 0r/0	0.5	1.0
8	CONNECTION PLATE	PL 140x58#	4	SS-280 2	0.3	1.2
9	NAME PLATE	PL 198x197#1	1	S.S.	1.0	1.0
10	BRACKET	PL 248x248#4	1	A363 0r/0	3.0	3.0
					TOTAL WEIGHT	1384

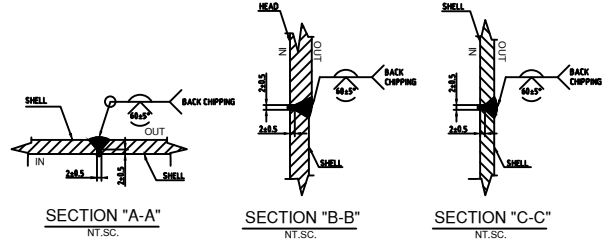
- 1- ALL DIMENSIONS ARE IN (mm), UNLESS SPECIFIED NOTED.
- 2- ALL FLANGES & GASKETS ARE ACCORDING TO ANSI-B16.5 & ANSI-B16.21 UNLESS SPECIFIED NOTED.
- 3- ALL BOLT HOLES OF FLANGES SHALL BE STRADDLE ON MAIN AXIS.
- 4- ANCHOR BOLTS SHALL BE DONE BY OTHERS.

GENERAL NOTES

* D.P = DIAMETER OF HOLE IN SHELL, HEAD & REINFORCING PAD.
* PROL. = DISTANCE FROM FLANGE RAISED FACE TO OUTER SURFACE OF THE SHELL OR HEAD.

QTY	MARK	SIZE	RAT	TYP.	FAC.	SCH.	PROJ.	REIN.	SERVICE
			LIB			THK.		PAD	

NOZZLES DATA



SECTION "A-A"
NT.S.C.

SECTION "B-B"
NT.S.C.

SECTION "C-C"
NT.S.C.