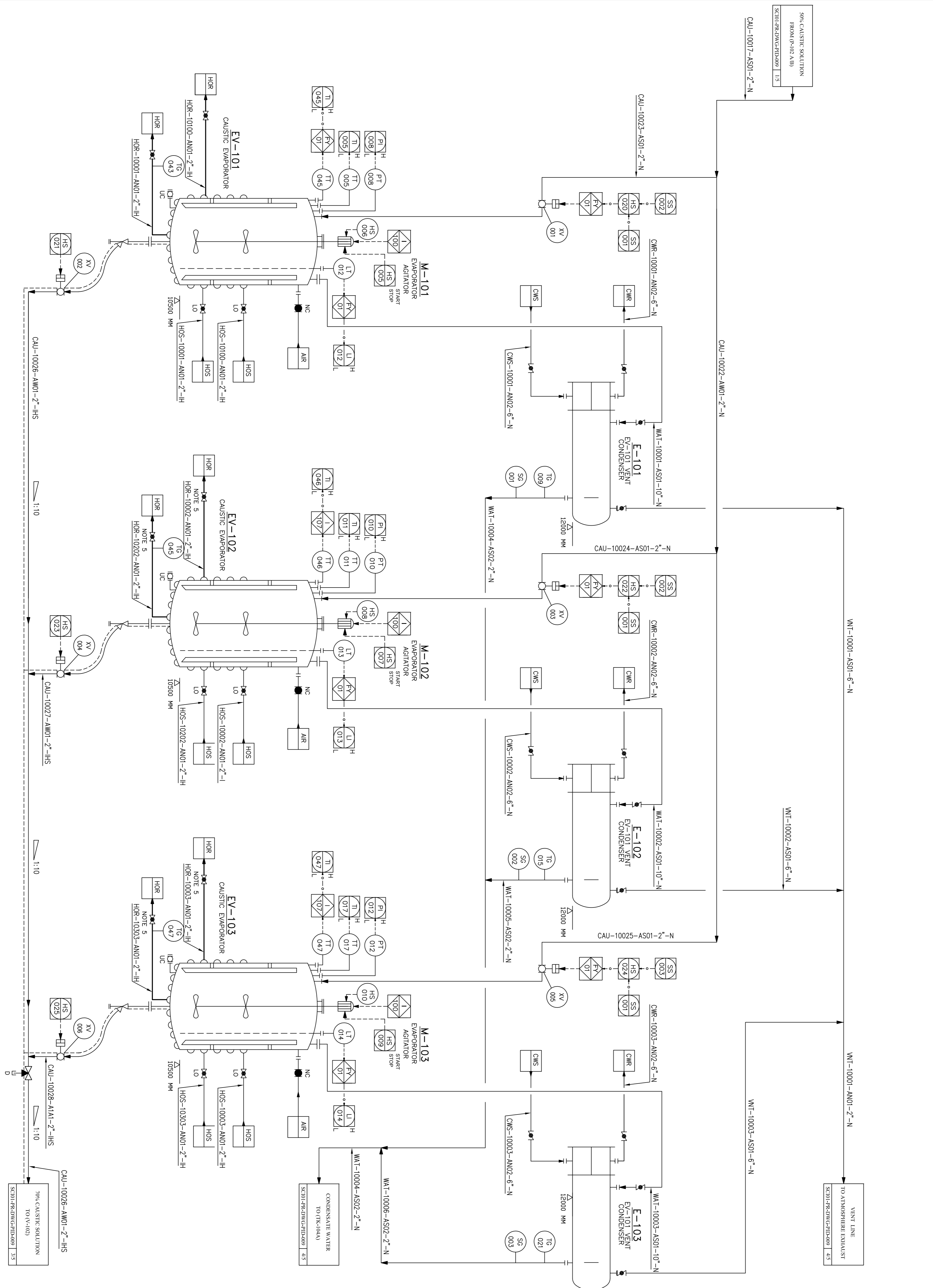


EV-101/102/103
 CAUSTIC SOLUTION EVAPORATORS
 DIMENSION : ID 2000 x TT 3000 mm
 Des. Pres. : 3.5 Bar/g
 Des. Temp. : 265 °C
 INSULATION : IS

E-101/102/103
 EVAPORATORS VENT CONDENSERS
 DESIGN PRESSURE (SHELL/TUBE) : 7/5.4 Bar/g
 DESIGN TEMPERATURE (SHELL/TUBE) : 166/85 °C
 INSULATION : YES (P/P)



NOTES

- 1-ELECTRICAL TRACING TEMPERATURE TO BE MAINTAINED AT 40°C(N.A).
- 2-TO BE ELECTRICALLY TRACED AND INSULATED (N.A).
- 3-SS-101 IS A SELECTOR SWITCH FOR SELECTION OF DESIRED EVAPORATOR BY OPERATOR TO GIVE THE PERMISSION TO INLET PNEUMATIC VALVE.
- 1: SELECTION OF EV-101
- 2: SELECTION OF EV-102
- 3: SELECTION OF EV-103
- 4-SS-102/103/104 ARE THE SELECTOR SWITCHES FOR SELECTION OF AUTOMATIC OR MANUAL MODES OF SELECTED EVAPORATOR BY SS-101.
- 5-HOT OIL RETURN LINE VALVE SHALL BE CLOSED BY OPERATOR AT HIGH TEMPERATURE ALARM.
- 6-FV-01 IS THE EVAPORATORS OPERATION FUNCTION WHICH IS BE DEFINED IN PROCESS & CONTROL PHILOSOPHY DOCUMENT, DOC NO. "SC01-PR-PRC-P0D-001"

GENERAL NOTES

- ALL INSTRUMENT TAG NUMBERS ARE PRECEDED BY 10.
- FOR PIPING AT HIGH AND LOW POINTS VENT AND DRAIN SHALL BE CONSIDERED.

EQUIPMENT LIST

VESSEL	EXCHANGER
EV-101/102/103	E-101/102/103

UTILITY P&ID NUMBER

AS-BUILT

Employer: Sarcheshmeh Copper Investment Co. Consultant: Pars Baryan Consulting Engineers	Contractor: Kimia Neshan Kerman Salzar Title: Sodium Sulfide Project: PIPING & INSTRUMENTATION DIAGRAM (P&ID)
Designed By: Prepared By: Checked By: Approved By:	DWG Type: DWG No.: SC101-PR-DWG-PID-009 Sheet: